



**ADALI GROUP**

*ALWAYS FORWARD*

ADALI

# ABOUT US

Established in 1984, Adali Group has evolved into a globally recognized manufacturing, coating, and engineering group built on strategic vision, advanced technology, and uncompromising quality.

Specializing in complete machinery systems, roll production, and advanced rubber, polyurethane, and chrome coating technologies, Adali Group delivers integrated industrial solutions to international markets. Our extensive global references span the iron and steel, aluminum and metals, textile, cement, paper, glass, energy and mining industries.

Our sustained growth is built on customer focus, continuous innovation, strong corporate governance, and a highly skilled workforce. With advanced manufacturing infrastructure spanning a total area of 40,000 m<sup>2</sup> (430,000 sq. ft.), including 27,500 m<sup>2</sup> (300,000 sq. ft.) of closed production facilities, modern CNC machining systems, strict adherence to international standards, and reliable on-time delivery, we consistently create long-term value for our stakeholders.

With high-precision production facilities in Turkey and engineering offices in the USA and Germany, we continue to strengthen our global presence and exceed international customer expectations.

Committed to excellence and sustainability, Adali Group consistently delivers superior quality worldwide while contributing to long-term economic development.

**ADALI**  
Makina  
1984

**ADALI**  
Kauçuk  
2004

**Expansion of the  
production area**  
2010

**Partnership with  
Valmet Metso**  
2016

**ADACO**  
Maschinentchnik GmbH  
2019

**New investments and  
capacity expansion**  
2020

**ADALI**  
USA Adali Machinery Co.  
2026

# Corporate Overview



## Vision

To be a globally recognized engineering and manufacturing group delivering innovative, reliable, and sustainable industrial process line solutions, setting international benchmarks in quality, technology, and operational excellence.

## Mission

To engineer, and manufacture high-performance process line systems in full compliance with ISO and internationally recognized manufacturing standards. We exceed customer expectations through advanced engineering, precision manufacturing, continuous improvement, and environmentally responsible practices.

## Core Values

Guided by integrity, excellence, and innovation, we operate in line with ISO 9001, ISO 14001, ISO 45001, and international manufacturing standards such as EN, DIN, and ASTM. We prioritize quality, safety, sustainability, technological advancement, and the continuous development of our people. Through customer-focused solutions, we create long-term value and build trusted global partnerships



# What we do



**Iron and Steel**



**Metals**



**Textile**



**Cement**



**Aerated Concrete**



**Paper and Carton**



**Defense**



**Glass**



**Chemicals**



**Energy**



**Mining**



**Blast Furnace**

# References

**SMS**  **group**

**ANDRITZ**

 **DANIEMI**

 **DUMA  
BANDZINK**



**AMOVA**   
SMS group

**voestalpine**



**TOSYALI  
HOLDING**

 **PAUL WURTH**  
SMS group

**ELOTHERM**  
SMS group

**masa**  
Milestone to your success.

 **PRIMETALS  
TECHNOLOGIES**

 **STEEL  
MMK  
METALURJİ**

 **TATMETAL**

  
**DREVER  
International**

**Polimiroir**  
Industrial rolls manufacturing

**LOESCHE** 

**xella**

 **akfa**

**YTONG**<sup>®</sup>

 **AssanAlüminyum**

**FORTEM**  
SUSTINE CONSTRUCTIV

 **AIRCRETE  
EUROPE**

 **ASAŞ**

 **ATAKAŞ  
ŞİRKETLER GRUBU**

**Valmet**   
FORWARD

 **HESS AAC SYSTEMS**



**modern karton**

  
**Hamburger Containerboard  
PRINZHORN GROUP**

**Modern  
CONCRETE**  
All Products



 **KİPAŞ HOLDING**

# Modern CNC Manufacturing Infrastructure



At Adali Group, we utilize advanced CNC manufacturing technologies, including multi-axis CNC boring-milling centers, CNC lathes, CNC milling machines, precision grinding systems, robotic welding, and polyurethane coating systems. This modern production infrastructure ensures high accuracy, superior efficiency, and consistent quality in all critical components.



**7-AXIS BORING MACHINE**



**POLYURETHANE COATING MACHINE**



**CNC LATHE MACHINE**



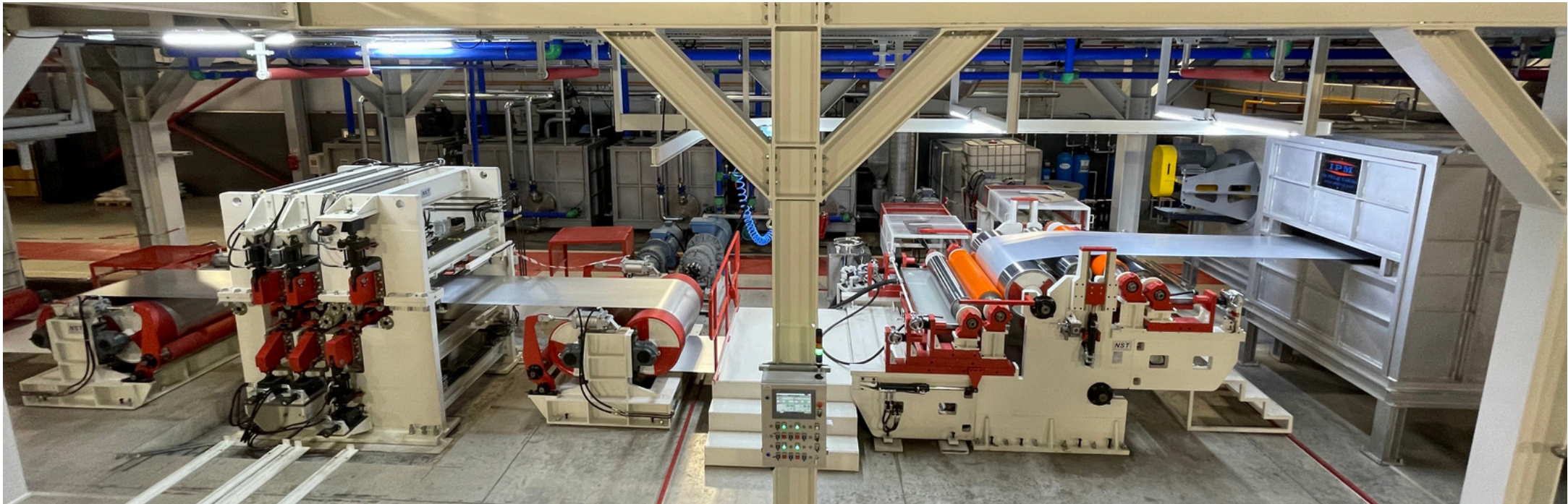
**GRINDING MACHINE**

# Process Lines



We manufacture complete process line equipment worldwide with Adali quality, ensuring full compliance with international standards and the highest level of customer satisfaction.

- **Push-Pull & Continuous Pickling Lines**
- **Continuous Color Coating Lines**
- **Continuous Galvanizing Lines**
- **Hot Dip Galvanizing Facilities**
- **Continuous Annealing Lines**
- **Alkali Cleaning Lines**
- **Slitting & Cut-to-Length Lines**



**Continuous Color Coating Line: Bridle Unit, Tension Leveler, Paint Machine & Furnace**



**Dolly Car**



**Rope Drum**



**Auxiliary Pinch Roll**



**Squeeze Roll Unit**



**Deflector Roll**



**Outboard Bearing**



## RUBBER COATING

- Hardness: 18-98 Shore A
- Temp: -60°C / +250°C

- Resistant to chemicals and oils



## POLYURETHANE COATING

- Hardness: 20 Shore A to Shore D
- Temp: -30°C / +120°C

- Resistant to wear, pressure, hydroxide solvents and oils



## CHROME & TEFLON COATING

- Hardness up to 900 HV
- Thickness up to 200 µm



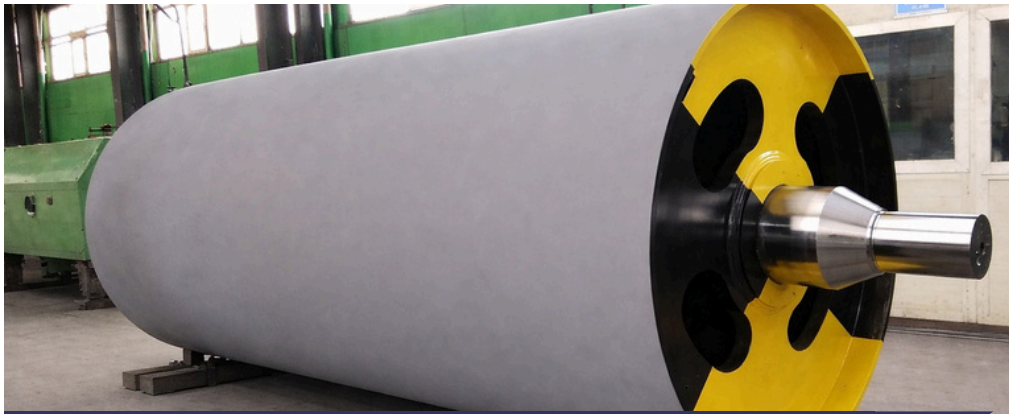
## THERMAL SPRAY COATING

- HVOF: dense, ultra-hard coatings up to 2000 µm (1300–1500 HV)

- High-performance coating solutions for wear, corrosion, and heat resistance.
- Arc Spray: coatings up to 12 mm
- Plasma Spray: advanced coatings for specialized applications

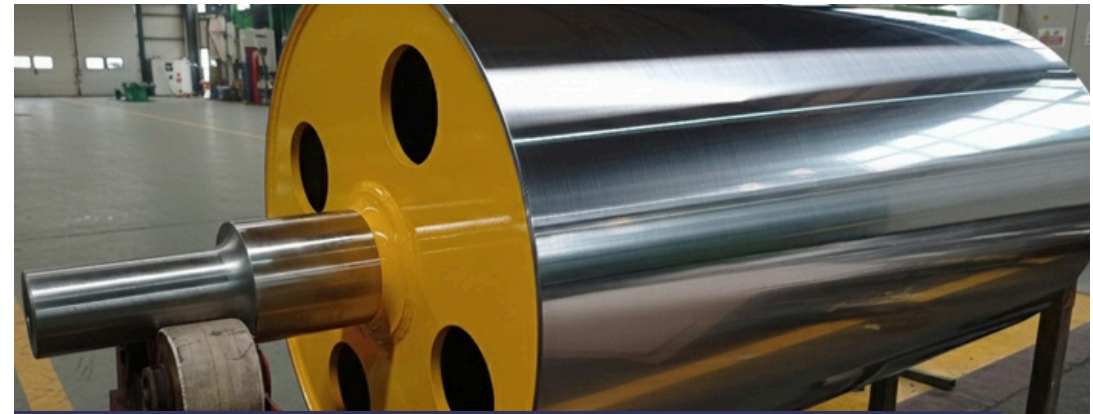
# Roll Production

As an experienced roller manufacturer, we can produce customized rolls according to customer drawings and requirements. Our coating abilities include rubber, polyurethane, tungsten carbide and chrome.



## Tungsten Carbide Coated Rolls

Tungsten carbide coating can be applied to rollers of different diameters and lengths according to application requirements.



## Chrome Coated Rolls

We can achieve specified surface roughness values on chrome coatings, up to mirror-finish quality, through precision grinding.



## Durable Industrial Polyurethane Rolls

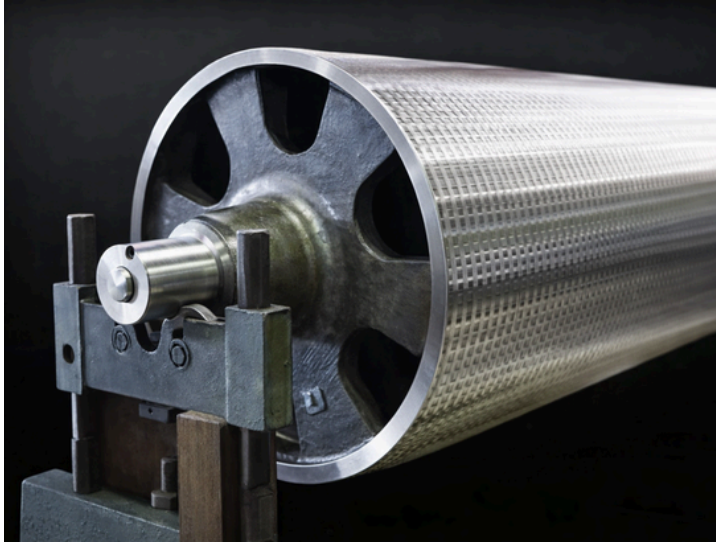
We manufacture high-performance polyurethane coatings and rollers for the steel industry, providing solutions focused on durability and efficiency.



## Food-Grade Rubber & Polyurethane Rolls

FDA-approved food-grade rubber and polyurethane coatings ensuring safe, hygienic, and durable performance in food processing lines.

# Samples of Our Rolls



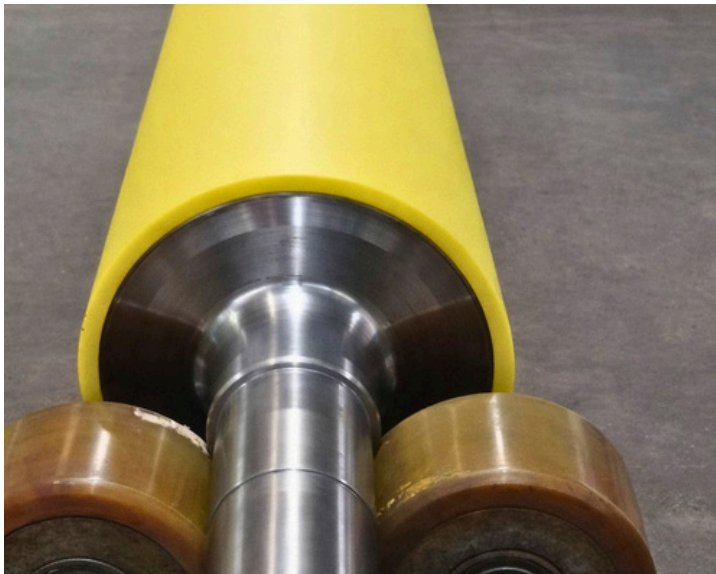
**Sink Roll**



**Galvanizing Sink Roll**



**Deflector Roll**



**Pinch Roll**



**Wringer Roll**

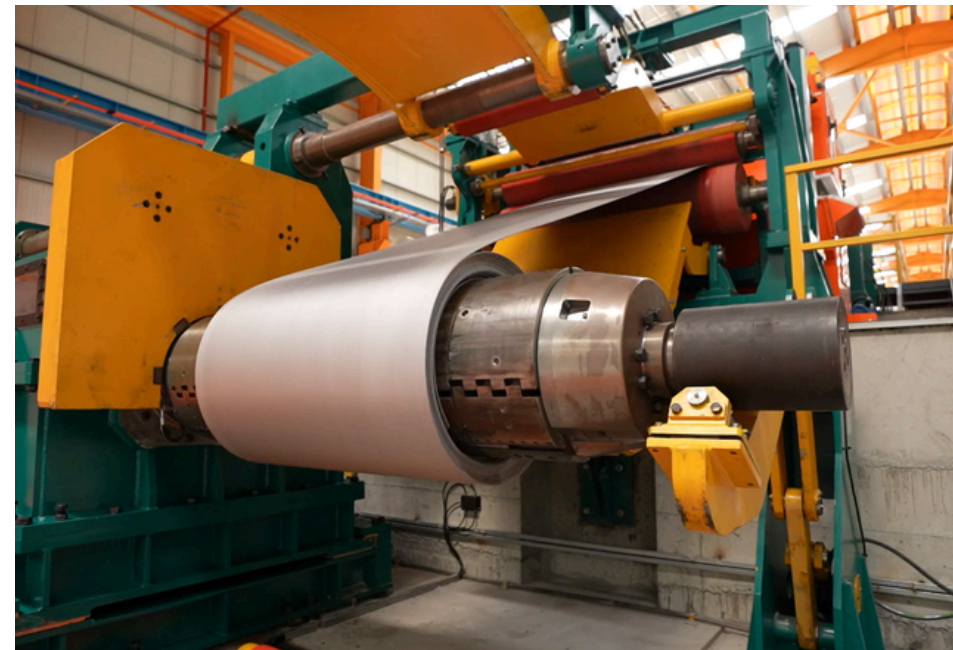


**Furnace Roll**

# Continuous & Push Pull Lines

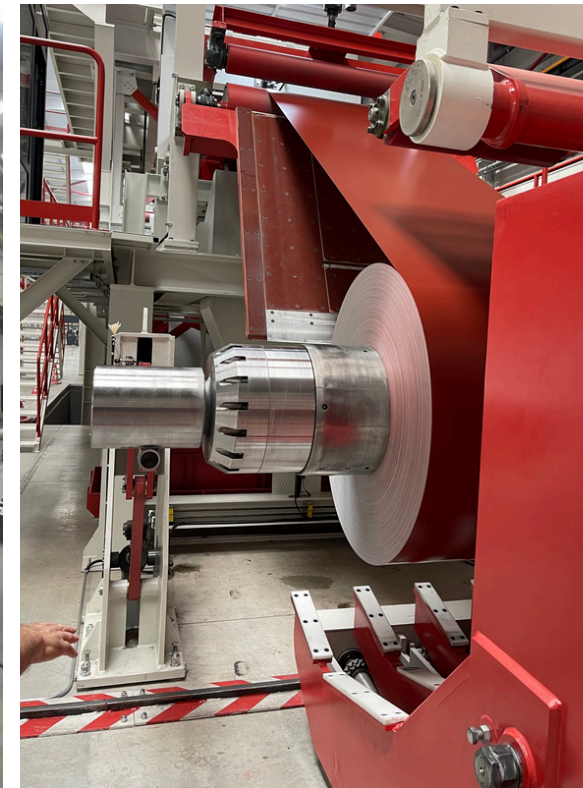
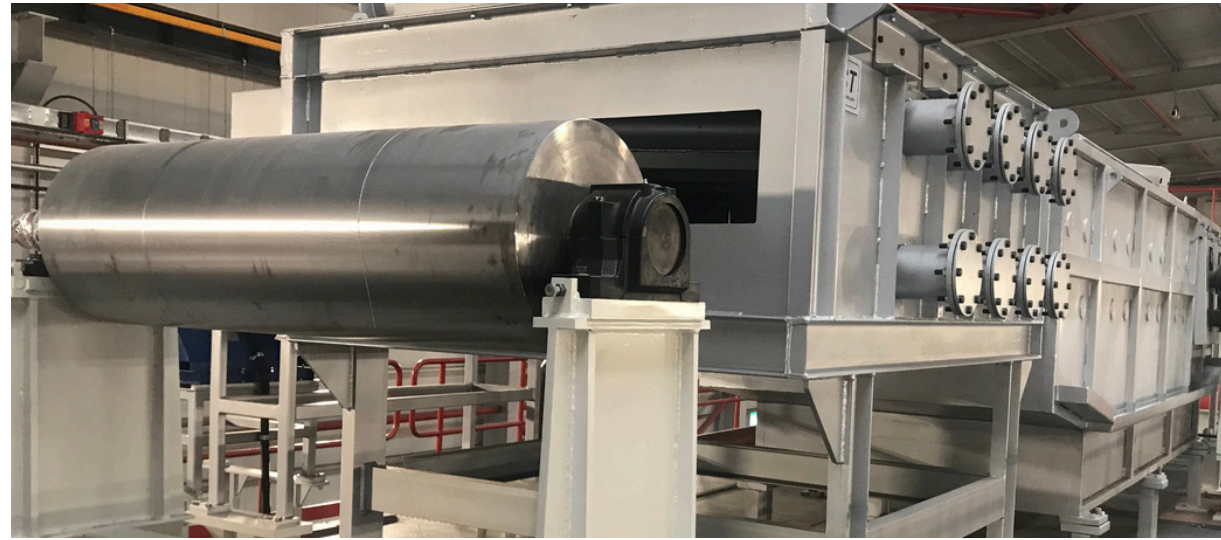


Adali Group manufactures and supplies high-performance and high-quality equipments or systems for both continuous lines and push-pull lines such as: Continuous Annealing Line (CAL), Galvanizing lines (CGL), Continuous Pickling Lines and Push-Pull pickling Lines to ensure reliable strip processing and long service life.



# Continuous Color Coating Lines

Adali Group manufactures and supplies high-performance and high-quality equipment and systems for continuous color coating lines with a focus on precision, durability, and process reliability.



# Samples of Our Projects



**Squeeze Roll**



**Traversing Track**



**PL Equipment**



**Strip Dryer**



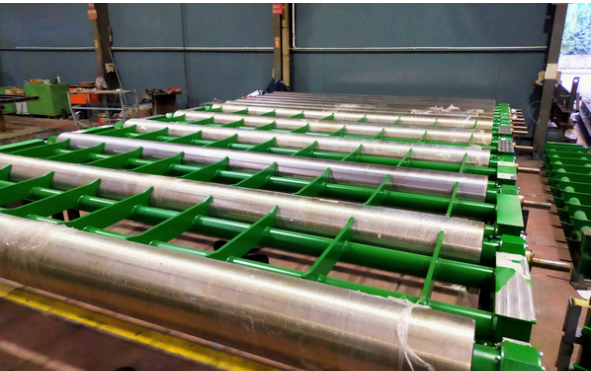
**Water-Cooled Duct**



**Deflector Roll Unit**



**CCL Equipment**

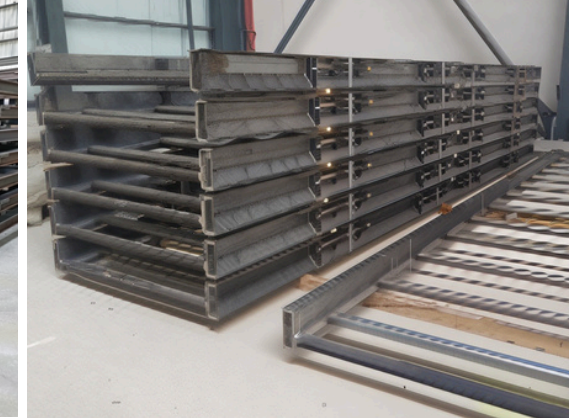


**Roll Table**



**Dummy Bar**

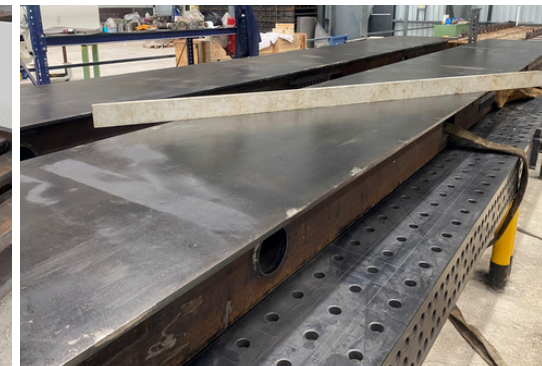
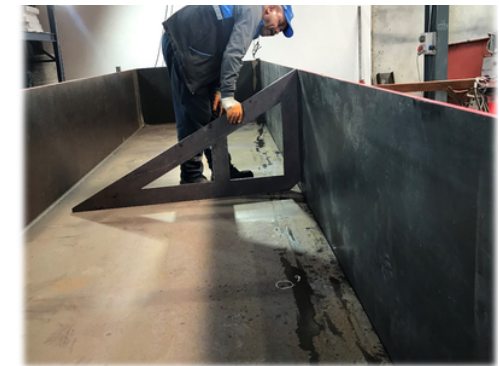
# Autoclaved Aerated Concrete



**Molds and Mold Frames**

**Hardening Car/Bogey**

**Hardening Grids**



**Control Methods and Assembly Process**



**Mixing Tower**



**Silos**



**Slurry Tank**



**Crushing-Screen Plant**



# ADALI GROUP

## CONTACT INFORMATION

### ***Head Office & Factory – Turkey***

İstiklal-Kurtpınar OSB Mah. Atatürk Cad. No: 22/1, 59700, Muratlı, Tekirdağ, Turkey

Phone: +90 282 361 26 10

Email: [adali@adalimakina.com.tr](mailto:adali@adalimakina.com.tr)

### ***USA Engineering & Sales Office***

USA Adali Machinery Co.

9841 Washingtonian Blvd., Suite 220-2

Gaithersburg, MD 20878, USA

Phone: +1 (914) 527-3766 / +1 (331) 224-8348

Email: [ecayir@adalimachinery.com](mailto:ecayir@adalimachinery.com) / [info@adalimachinery.com](mailto:info@adalimachinery.com)

### ***Germany Engineering & Sales Office***

Schuckertstraße 18a, 48153

Münster, North Rhine-Westphalia, Germany

Phone: +90 535 490 3117 / +90 532 557 1488

Email: [selimeok@adalimakina.com.tr](mailto:selimeok@adalimakina.com.tr) / [mertadali@adalimakina.com.tr](mailto:mertadali@adalimakina.com.tr)